

# WINTER

*Collection*

OUTDOOR AND INDOOR LEISURE

ENJOY  
SNOW  
TUBES



PLAY  
TOYS



REFRESH  
SPA &  
ACCESSORIES



RELAX AND SLEEP  
AIRBED &  
AIR FURNITURE







1

ENJOY

## SNOW TUBES

- P. 6 - H2OGO!™ Snow

2

PLAY

## TOYS

- *License*
- *Up In & Over*

- P. 12 - License
- P. 20 - Up, In & Over

3

REFRESH

## SPA & ACCESSORIES

- P. 32 - Spa & Accessories
- P. 34 - Technologies & Constructions
- P. 36 - Lay-Z-Spa™ Full range
- P. 38 - Lay-Z-Spa™ Helsinki
- P. 40 - Lay-Z-Spa™ Xtras

4

RELAX AND SLEEP

## AIRBED & AIR FURNITURE

- P. 42 - Airbed & Air furniture
- P. 44 - Technologies & Constructions
- P. 46 - Airbed full range
- P. 48 - Air furniture full range

5

RELAX AND SLEEP

## ACCESSORIES

- P. 50 - Accessories







## W E L C O M E

---

Bestway® is delighted to present our  
2019 Winter Collection!

Our collection is overflowing with products for all of the seasons! If you fill your store shelves with our products, you can increase your store's visibility and profitability all year round. Packed with innovative products, our winter catalogue provides a collection that can enrich every room, indoor and outdoor.

Let's start with the kids' room.

With the focus on FUN, we've designed and created inflatable indoor toys that are affordable, colourful, and interactive. All items are suitable for special promotions and would perform remarkably well on Black Friday and during the Christmas season.

Next, let's take a look at our amazing line of spas. Lay-Z-Spa's™ provide a soothing sense of relaxation and luxury in a variety of shapes and sizes.

Along with a multitude of technological features, the collection has the perfect spa for everyone.

For unbeatable fun during snow days, the H2OGO!™ Snow inflatable tubes and sleds are perfect for speeding downhill with style!

Lastly, you can rest easy with our range of Bestway Airbeds while knowing you aren't compromising quality.

---

*We at Bestway  
offer the best way to enjoy winter,  
guaranteed!*

1

# SNOWTUBES

Let it snow,  
let it snow,  
let it snow!

Our H2OGO!™ Snow line is designed to make winter an arctic blast for all kids, young and old! Our assortment provides fun for the whole family with products designed for one, two or even three riders. Every sled and tube is constructed with ultra-durable, Polar Shield™ material. This heavy-duty material has a weather protective coating that prevents products from freezing in the chilly, winter months. With vibrant graphics, heavy-duty handles, and designs with realistic printing, each slide down the hill is more fun with H2OGO! Snow.









39057



## Flurryz Child Sled

- 84cm x 46cm (33" x 18")
- Seats one
- Back rest for extra support
- Built with sturdy pre-tested Polar Shield™ material
- Tow rope with built-in grommet
- Eye catching graphics
- Interlocking quick release valves
- 0.40 mm (16.0 ga.) vinyl
- Max. load capacity: 20 Kg (44 Lb.)
- Pack: Full color box
- 12 Ea., 10.55Kg (23.26Lb.)



39066



## PIZZA MAR-GO-RITA SNOW TUBE

- 99cm (39")
- Freeze resistant Polar-Shield™ material provides cold weather protection
- Sturdy, puncture resistant material
- Oversized glove-ready handles
- Realistic print
- Pack: Full colour box
- 0.40 mm (16.0 ga.) vinyl
- 8Ea, 10.81Kg (23.83Lb.)



39068



## SNOW TIRE TUBE

- 99cm (39")
- Freeze resistant Polar-Shield™ material provides cold weather protection
- Sturdy, puncture resistant material
- Oversized glove-ready handles
- Realistic print
- Pack: Full colour box
- 0.40 mm (16.0 ga.) vinyl
- 8Ea, 10.81Kg (23.83Lb.)









39004



## Frost Blitz Tube

- Ø99cm (Ø39")
- Seats one
- Built with sturdy pre-tested Polar Shield™ material
- Heavy-duty handles
- Eye catching graphics
- Interlocking quick release valve
- 0.40 mm (16.0 ga.) vinyl
- Max. load capacity: 90 Kg ( 198 Lb.)
- Pack: Full color box
- 8 Ea., 9.91Kg (21.85Lb.)



39010



## Frost Blitz Double Tube

- 1.85m x 94cm (73" x 37")
- Seats two
- Built with sturdy pre-tested Polar Shield™ material
- Heavy-duty handles
- Eye catching graphics
- Interlocking quick release valve
- 0.40 mm (16.0 ga.) vinyl
- Max. load capacity: 180 Kg (396 Lb.)
- Pack: Full color box
- 4 Ea., 9.44Kg (20.81Lb.)



39052



## Winter Rush Triple Tube

- 1.52m x 1.52m (60"x 60")
- Seats three
- Built with sturdy pre-tested Polar Shield™ material
- Heavy-duty handles
- Eye catching graphics
- Interlocking quick release valve
- 0.50 mm (20.0 ga.) vinyl
- Max. load capacity: 270 Kg (595 Lb.)
- Pack: Full color box
- 4 Ea., 13.96Kg (30.78Lb.)





39053



## Winter Rush Covered Tube

- 1.42m (56")
- Seats one
- Fabric cover
- Built with sturdy pre-tested Polar Shield™ material
- Heavy-duty handles
- Tow rope
- Eye catching graphics
- Interlocking quick release valve
- 0.40 mm (16.0 ga.) vinyl
- Max. load capacity: 90 Kg (198 Lb.)
- Pack: Full color box
- 3 Ea., 11.7 Kg (25.8 Lb.)



39006



## Polar Edge Tube

- Ø1.27m (Ø50")
- Seats one
- Built with sturdy pre-tested Polar Shield™ material
- Heavy-duty handles
- Eye catching graphics
- Interlocking quick release valve
- 0.40 mm (16.0 ga.) vinyl
- Max. load capacity: 90 Kg (198 Lb.)
- Pack: Full color box
- 6 Ea., 10.82Kg (23.85Lb.)



39054



## Flurryz Sled

- 1.07m x 48cm (42"x 19")
- Seats one
- Built with sturdy pre-tested Polar Shield™ material
- Heavy-duty handles
- Eye catching graphics
- Interlocking quick release valve
- 0.40 mm (16.0 ga.) vinyl
- Max. load capacity: 90 Kg (198 Lb.)
- Pack: Full color box
- 12 Ea., 10.92Kg (24.07Lb.)



## 2

# TOYS *License*

Our extensive range of licensed toys comes in all shapes and sizes, from colourful ball pits to super fun bouncers, specially designed to suit every family.

Enjoy year-round best sellers from brands like Fisher-Price®, Barbie®, Disney® and Hot Wheels®. Each brand provides a unique store placement and interactive fun for the little ones. In addition, our packaging provides strong merchandising support by showcasing all the amazing features that Bestway® products have to offer.

Fisher-Price® allows imaginations to soar while helping children continue to build motor skills. Our Barbie® and Disney Princess® lines allow little girls to make their dreams come true, while little boys can aspire to be amazing pilots with our Mickey and the Roadster racers® and Hot Wheels® products.

Bestway has long-lasting relationships with some of the most popular brands in the industry.





Fisher-Price



93501



## 3-Ring Ball Pit Play Pool

- Ø91cm x H25cm (Ø36" X H10")
- Beat the heat and have a great time with a brightly colored inflatable 3-ring pool!
- Made with safety valves and sturdy pre-tested vinyl.
- Repair patch
- Full color box
- 0.20 mm (8.0 ga.) vinyl
- 2 Ea., 2.4 Kg (5.4Lb)

**25 BALLS INCLUDED!**



93535



## Race Car Ball Pit

♥ NEW

- 1.19m x 79cm x 51cm (47" x 31" x 20")
- Safety valves
- Repair patch
- Full color box
- 0.22 mm (8.8 ga.) vinyl
- 2 Ea., 3.9 Kg (8.60 Lb)

**25 BALLS INCLUDED!**



93538



## Helicopter Ball Pit

♥ NEW

- 1.55m x 1.02m x 91cm (61" x 40" x 36")
- Licensed Helicopter shaped ball pit
- Made with safety valves and sturdy pre-tested vinyl
- Repair patch
- Full color box
- 0.26/0.24 mm (10.4/9.6 ga.) vinyl
- 4 Ea., 10.9 kg (24.03 Lb)



FUN MOVING  
HELICOPTER  
PROPELLER

**25 BALLS INCLUDED!**







93537



## Train Ball Pit

NEW



- 1.32m x 94cm x 89cm (52" x 37" x 35")
- All aboard the train-shaped ball pit!
- Built with a removable inflatable front for children to enter and exit and a train horn that makes a SPECIAL SOUND!
- Made with safety valves and sturdy pre-tested vinyl
- Repair patch
- Full color box
- 0.26/0.24 mm (10.4/9.6 ga.) vinyl
- 2 Ea., 6.06 kg (13.36 Lb)

25 BALLS INCLUDED!



SECRET DOOR



SQUEEZE HORN FOR A SPECIAL SOUND

93506



## Lil' Learner School Bus



- 1.37m x 96cm x 96cm (54" x 38" x 38")
- Steering wheel with built-in horn
- Fun for children
- Repair patch
- Full color box
- 0.24 mm (9.6 ga.) vinyl
- 2 Ea., 7.6 Kg (16.8 Lb.)

20 BALLS INCLUDED!

93541



## Animal Friends Ball Pit

NEW



- 89 cm x 89 cm x 84 cm / 35" x 35" x 33"
- Interactive Ball Slots
- Full colour box
- 0.26 / 0.24 mm (10.4 / 9.6 ga.) vinyl
- 6Ea., 7.4 kg (16.3 Lb.)

15 BALLS INCLUDED!

93536



## Bouncetastic Bouncer

- 1.75m x 1.73m x 1.35m (69" x 68" x 53")
- Jump, hop, and leap into the BOUNCETASTIC BOUNCER!
- Removable sidewalls for custom play
- Made with safety valves and sturdy pre-tested vinyl
- Heavy-duty Repair patch
- Full color box
- 0.35/0.30 mm (14.0/12.0 ga.) vinyl
- 1 Ea., 9.15 kg (20.17Lb)

REMOVABLE  
SIDEWALLSDURABLE  
BOUNCING FUN



93533



## Bouncesational Bouncer

- 1.75m x 1.73m x 1.35m (69" x 68" x 53")
- Built-in DC 12V electric air pump
- Sturdy pre-tested vinyl
- Heavy-duty repair patch
- Solid walls are not removable – this is to keep children safe. Only a door is available for children to enter and exit.
- Full color box
- Weight capacity: 85 kg (188 Lb.)
- 0.40/0.35 mm (16/14 ga.) vinyl
- 1 Ea., 10.9 kg (24.1 Lb.)

**50 BALLS INCLUDED!**

93542



## Jumptacular Bouncer

- 1.75m x 1.73m x 1.14m (69" x 68" x 45")
- Built-in Ball Hoop & Maze
- Mesh Walls for Visibility
- Full colour box
- 0.35/ 0.30mm (14.0 / 12.0 ga.) vinyl
- 1Ea., 8.82kg (19.44Lb)



BUILT-IN HOOP



BALL MAZE

**25 BALLS INCLUDED!**






91050



## Castle Bouncer

- 1.57m x 1.47m x 1.63m (62" x 58" x 64")
- Removable solid walls
- Weight capacity: 85.0 Kg (188.0 Lb.)
- Repair patch
- Full color box
- 0.24 mm (9.6 ga.) vinyl
- 4 Ea., 17.45 kg (38.47 Lb)



REMOVABLE  
SOLID  
WALLS



93207



## Sports Car Ball Pit

- 1.35m x 99cm x 43cm (53" x 39" x 17")
- Steering wheel with built-in-horn
- Repair patch
- Full color box
- 0.27/0.22 mm (10.8/8.8 ga.) vinyl
- 4 Ea., 8.99 kg (19.82 Lb)



STEERING  
WHEEL WITH  
BUILT-IN-HORN



BACKREST FOR  
COMFORT

**25 BALLS  
INCLUDED!**

93208



## Malibu Play House

- 1.50m x 1.35m x 1.42m (59" x 53" x 56")
- Two windows
- Inflatable floor provides extra comfort
- Repair patch
- Full color box
- 0.25 mm (10.0 ga.) vinyl
- 2 Ea., 13.02kg (28.07 Lb)



INFLATABLE  
FLOOR



TWO  
WINDOWS





91075



## Boppin' Bouncer

- Ø1.37m x H1.19m (Ø54" x H47")
- Inflatable walls for added safety
- Includes 4 inflatable rings
- Weight capacity: 55 Kg (122 Lb.)
- Repair patch
- Full color box
- 0.32/0.25 mm (12.8/10.0 ga.) vinyl
- 3 Ea., 14.24kg (31.39 Lb)



93404



## Ball Pit

- 1.35m x 99cm x 43cm (53" x 39" x 17")
- Steering wheel with built-in-horn
- Repair patch
- Full color box
- 0.27/0.24 mm (10.8/9.6 ga.) vinyl
- 4 Ea., 9.7 Kg (21.3 Lb.)



STEERING WHEEL WITH BUILT-IN HORN



BACKREST FOR COMFORT

**25 BALLS INCLUDED!**



## 2

**TOYS** *Up In & Over*

Our Up In & Over™ collection showcases active and functional items for Early Childhood development - enabling little ones to have fun and learn while parents take care of daily activities. Our products add value to playtime by supporting motor skill, dexterity and senses' development. The Up In & Over line is interactive and safe with our colourful bouncers, brand new ball pits and bop bags with realistic printing.







34030 

## Bath Puffy Pals

- Frog: 27cm (10.5")
- Octopus: 23cm (9")
- Ball Fish: 26cm (10")
- Seal: 34cm (13.5")
- Dino: 24.5cm (9.5")
- Sea Star: 22cm (8.5")
- 6 assorted animal designs
- Full color box
- 36 Ea., 2.09 kg (4.61 Lb)

51134 

## Squeaky Clean Inflatable Baby Bath

- 76cm x 48cm x 33cm (30" x 19" x 13")
- Inflatable ribbed floor provides added comfort and prevents slipping
- Great for travel – easy to inflate and deflate
- Fish shaped thermometer can be used as a toy for kids; also can be used to examine the water temperature
- Built-in soft stopper at bottom to prevent kids from sliding down
- Ideal for 0 to 2 year old
- Repair patch
- Full color box
- 0.27 mm (10.8 ga.) vinyl
- 8 Ea., 7.04 kg (15.52 kg)



FISH SHAPED THERMOMETER!  
BUILT-IN SOFT STOPPER AT BOTTOM!

51116 

## Baby Tub

- 86cm x 86cm x 25cm (34" x 34" x 10")
- Soft inflatable floor provides added comfort
- Conveniently fits inside standard shower stalls
- Great for travel – easily to inflate and deflate
- Releases pool water with the easy – to use drain valve!
- Repair patch
- Full color box
- 0.27 mm (10.8 ga.) vinyl
- 8 Ea., 8.82 kg (12.1 Lb)



POOL BOTTOM  
DRAIN VALVE







52241



## Changing Mat



- 81cm x 63cm x 46cm (32" x 25" x 18")
- Inflated bottom provides extra comfort
- 2 hanging toys on the arch can be squeezed for a special sound
- Repair patch
- Full color box
- 0.27/0.22 mm (10.8/8.8 ga.) vinyl
- 12 Ea., 8.2 kg (12.1 Lb)

52239



## Rainbow Go & Grow Activity Gym



- Ø91cm x H56cm (Ø36" x H22")
- Soft inflatable floor provides added comfort
- 4 colorful toys can be inserted on the top ring of the playpen
- 2 hanging toys on the arch can be squeezed for a special sound
- Repair patch
- Full color box
- 0.27/0.24 mm (10.8/9.6 ga.) vinyl
- 8 Ea., 8.96 Kg (19.75 Lb.)



REMOVABLE INFLATABLE FLOWERS AND ANIMALS!



INFLATED BELLS!



INFLATABLE FLOOR

52240



## Friendly Animals Play Mat



- 1.32m x 1.32m x 23cm (52" x 52" x 9")
- Soft inflatable floor provides added comfort
- Repair patch
- Full color box
- 0.27/0.24 mm (10.8/9.6 ga.) vinyl
- 6 Ea., 12.65 Kg ( 27.89 Lb.)



INFLATABLE FLOOR

52220



## Baby Animal Rocker

- Joyful Giraffe: 86cm x 43cm x 63cm (34" x 17" x 25")
- Dizzy Dino: 86cm x 43cm x 61cm (34" x 17" x 24")
- Adjustable back rest
- Sturdy Handles
- Safety valves
- Sturdy pre-tested vinyl
- Repair patch
- Full color box
- 0.26/0.24 mm (10.4/9.6 ga) vinyl
- 8 Ea., 5.8 Kg (12.8 Lb.)



52027



## Splash and Play 100 Play Balls

- Ø6.5cm (Ø2.5")
- 100 Play balls
- Heavy-duty material
- Air filled
- Smooth seam
- Can be used with many of Bestway® products
- 4 assorted colors
- 4 Ea., 3.6 Kg (7.8 Lb.)



52296



## Antimicrobial Play Balls with GermShield™

- 6.5 cm (2.5")
- Compatible with all Bestway® products
- Smooth and flush seams
- Heavy-duty, puncture resistant material
- Play balls have special antimicrobial coating - Germ Shield™
- Prevents 99.9% of E. Coli and Staph infection bacteria
- 100 antimicrobial play balls
- Zipper Bag
- 4 Ea., 3.6 kg (7.8 Lb.)







52221



## Rainbow Go & Grow Play Center



- Ø1.09m x H1.04m (Ø43" x H41")
- Safety valves
- Sturdy pre-tested vinyl
- Soft inflatable floor provides added comfort
- 4 colorful toys can be inserted on the top ring of the playpen
- 2 hanging toys on the arch can be squeezed for a special sound
- Mesh fabric around the playpen for better supervision of the kids
- Weight capacity: 30 Kg (66 Lb.)
- Repair patch
- Full color box
- 0.26/0.24 mm (10. 4/9.6 ga) vinyl
- 4 Ea., 11.20 Kg (24.69 Lb.)



SOFT INFLATABLE FLOOR



COLORFUL TOYS

51141



## 2-Ring Ball Pit Play Pool

NEW



- Φ91cm x Φ20cm / Φ36in. x H8in.
- 2 equal rings
- 2-for-1: ball pit and play pool
- 2 assorted colors
- Repair patch
- Full color box
- Designed water capacity: 73 L (19 gal.)
- 4 Ea., 4.6 kg (10.2 Lb.)

**50 BALLS INCLUDED!**

68080



## Kids Ball Pit & Play Land



- 1.12m x 1.12m x 90cm (44" x 44" x 35")
- Brightly printed fabric
- Uni-sex color suited for both boys and girls
- Easy to set up
- Great for indoor use
- Full color box with handle
- 4 Ea., 5.6 Kg (12.4 Lb.)

**40 BALLS INCLUDED!**

52217



## Helicopter Ball Pit

- 1.40m x 1.27m x 89cm (55" x 50" x 35")
- Great for indoor or outdoor play
- Repair patch
- Full color box
- 0.26/0.24 mm (10.4/9.6 ga.) vinyl
- 2 Ea., 6.53 Kg (14.40Lb.)



FLEXIBLE  
HELIX ON  
TOP



PANEL  
CONTROL



**50 BALLS INCLUDED!**

52007



## Play House

- 1.02m x 76cm x 1.14m (40" x 30" x 45")
- Easy snap in PVC construction
- No tools needed
- 1 retractable door
- Full color box
- 6 Ea., 9.17 Kg(20.22 Lb)



52278



## Dozer Ball Pit

- 1.98m x 1.05m x 84 cm (66" x 41" x 33")
- Interactive cab and movable lift-blade
- Pull the drawstring for fun, interactive action
- Mesh walls for safety and parent visibility

♥ NEW



**25 BALLS INCLUDED!**







52266



## Jungletime Ball Pit



- 89cm x 86cm x 1.07m (35" x 34" x 42")
- Great for indoor play
- Children drop play balls through jungle monkey's arm and fall right through the bottom
- Children can place play balls into the sidewall holes
- Cute Inflatable Jungle
- Repair patch
- Full color box
- 0.26 mm (10.4 ga.) vinyl
- 4 Ea., 7.4 kg (16.4 Lb.)

**25 BALLS INCLUDED!**

52268



## Scoop'N Smiles Ice Cream Truck Ball Pit



- 1.22m x 84cm x 84cm (48" x 33" x 33")
- Fun for children
- Inflatable table includes and holds 2 ice cream cones
- Safety valves
- Sturdy pre-tested vinyl
- Repair patch
- Full color box
- 0.26/0.24 mm (10.4/9.6 ga.) vinyl
- 4 Ea., 8.9 kg (19.7 Lb.)

**10 BALLS INCLUDED!**

52261



## Lion Ball Pit

♥ NEW



- 1.11m x 98cm x 61.5cm (44" x 39" x 24")
- Friendly lion graphics with paw-shaped handles
- Soft, air pad floor for safe play
- Repair patch
- Full colour box
- 0.26 / 0.19mm (10.4 / 7.6 ga.) vinyl
- 4Ea., 7.89 Kg (17.39 Kg)

**50 BALLS INCLUDED!**



52056



## Jumping Tube Gym

- 1.52m x H1.07m (60" x 42")
- Removable rings for hours of fun
- Solid walls for added safety
- Weight capacity: 65Kg (144 Lb.)
- Repair patch
- Full color box
- 0.29 mm (11.6 ga.) vinyl
- 3 Ea., 15.26 Kg (33.64 Lb)



52262



## Bouncejam Bouncer

- 1.80m x 86cm (71" x 34")
- Solid colors sidewall for added safety
- Heavy-duty repair patch
- Full color box
- Weight capacity: 85 kg (188 Lb.)
- 0.35/0.30 mm (14.0/12.0 ga.) vinyl
- 2 Ea., 13.8 kg (30.5 Lb.)



52267



## Octopus Bouncer

- 1.42m x 1.37m x 1.14m (56" x 54" x 45")
- Fun octopus shape
- Inflatable walls for added safety
- Heavy-duty Repair patch
- Full color box
- Weight capacity: 55 kg (122 Lb.)
- 0.35/0.30 mm (14.0/12.0 ga.) vinyl
- 3 Ea., 13.8 kg (30.3 Lb.)







52269



## Hot Air Ballon Bouncer

- 1.75m x 1.73m x 1.37m (69" x 68" x 54")
- Colorful, interactive rainbow bouncer
- Place ring toss on built-in sidewall hooks
- Three inflatable rings included
- Heavy-duty repair patch
- Full color box
- Weight capacity: 85 kg (188 Lb.)
- 0.35/0.30 mm (14.0/12.0 ga.) vinyl
- 2 Ea., 17.3 kg (38.1 Lb.)



52279



## Pizza Bouncer

- 1.55m x 1.55m x 1.09m (61" x 61" x 43")
- Soft, air pad floor
- Fixed entryways for safe play
- Built-in crawl-thru pizza door
- Includes 4 foot pins for stability (not available for 52279-NE)
- Heavy-duty repair patch
- Full color box
- 0.35/0.30 mm (14.0/12.0 ga.) vinyl
- 2 Ea., 12.1 kg (26.7 Lb.)

NEW





52152



## Bop Bags

- 89cm (35")
- Built-in water chamber for hassle-free setup
- Fun for children
- 3 assorted designs
- Full color box
- 24 Ea., 6.7 Kg (14.7 Lb.)



52287



## Dinosaur Bop Bags

- T-Rex: 91cm / 36"
- Raptor: 96cm / 38"
- Para: 1.12m / 44"
- Unlimited bops, punches and kicks
- Built-in water chamber for hassle-free setup
- Detailed graphics for Dino lovers
- Full colour box
- 0.30 mm (12.0 ga.) vinyl
- 24Ea., 9.00 Kg (19.84 Lb.)



52288



## Gladiator Bop Bags

- 1.02m / 40"
- Unlimited bops, punches and kicks
- Built-in water chamber for stability
- Graphics inspired by Greek and Roman warriors
- Full colour box
- 0.30 mm (12.0 ga.) vinyl
- 24Ea., 7.10 Kg (15.65 Lb.)







75066



## Fruit Kiddie Lounge Chair

- Eggplant: 72cm x 72cm x 81cm (28" x 28" x 32")
- Strawberry: 72cm x 72cm x 94cm (28" x 28" x 37")
- Pineapple: 72cm x 72cm x 89cm (28" x 28" x 35")
- 3 assorted designs
- Repair patch
- Full color box
- 0.27/0.24 mm (10.8/9.6 ga.) vinyl
- 12 Ea., 10.9 kg (23.9 Lb.)



75010



## Beanless Soccer Ball Chair

- 1.14m x 1.12m x 66cm (45" x 44" x 26")
- Heavy duty repair patch
- Full color box
- 0.32 mm (12.8 ga.) vinyl
- 8 Ea., 14.1 Kg (31.0 Lb.)



## 3

---

# SPA & ACCESSORIES

Our Lay-Z-Spa™ collection is the world's first premium inflatable spa line. Almost a decade of advanced engineering has created a truly trustworthy brand.

Our spas are designed to soothe and refresh the body, while offering an affordable option that is easy to set up and use. This convenience factor guarantees that each Lay-Z-Spa experience is one of tranquility and relaxation. With a vast range of shapes and sizes, our large Lay-Z-Spa collection allows you effectively respond to any consumer requirement. Nothing beats the warm, peaceful feeling of sinking into a bubbling, massage spa after a long, hard day. Our Lay-Z-Massage System combines heat and massage jets to give you the ultimate spa experience.

Our spas are designed for comfort and superior quality. The Lay-Z-Spa line offers 3 different technologies to choose from: AirJet, Hydrojet and Hydrojet Pro, along with premium engineering, using durable Tritech™ material and dropstitch construction.

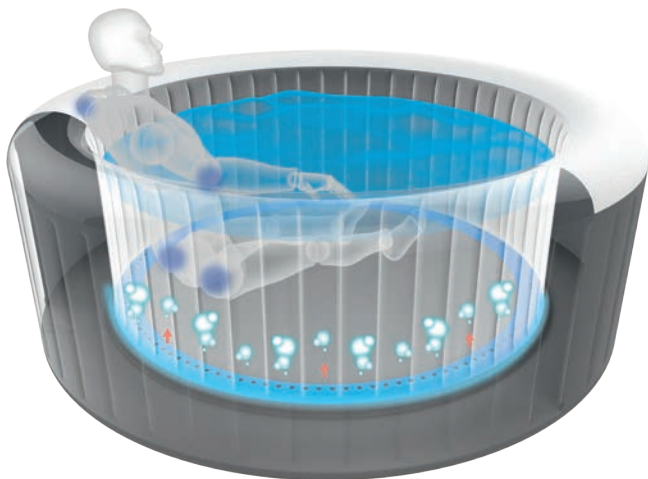
This year, our brand new Helsinki AirJet will have you snuggling comfortably in your spa during the coldest months thanks to our new and innovative Freeze Shield™ technology.







# TECHNOLOGIES



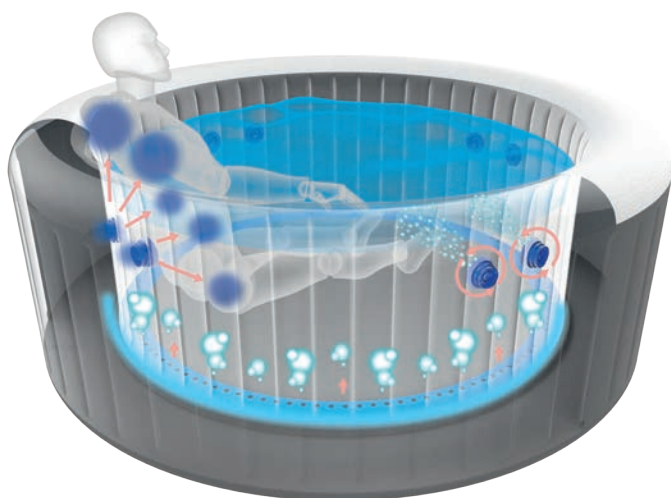
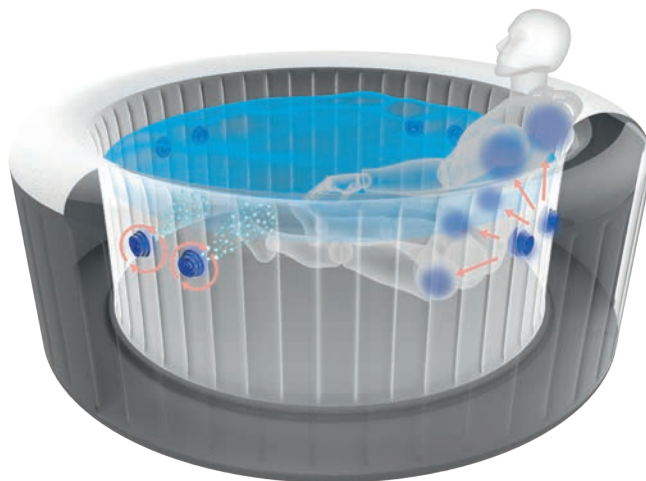
## **AirJet™**

Float away on a cloud of bubbles with an AirJet massage! Soothe your body and relax your mind with the touch of a button.

Simply press the Massage button on the control panel and Airjets will surround you with effervescent enjoyment.

## **HydroJet™**

This is ultimate spa relaxation right at your fingertips with eight fully adjustable HydroJets, this is just what the doctor ordered. Simply twist the HydroJet's bezel to adjust the water flow rate and pivot the nozzle to direct the jets to wherever you like. Share the luxury evenly among your spa companions, or if you're alone, direct all 8 HydroJets toward yourself for a deep, soothing, magical massage.



## **HydroJet Pro™**

AirJets PLUS HydroJets! You get the best of both worlds with the HydroJet Pro. Eight directional and flow-adjustable HydroJets combine with AirJets to provide the ultimate in spa relaxation. Select only the AirJets, just the HydroJets, or both at the same time – the choice is yours with HydroJet Pro!



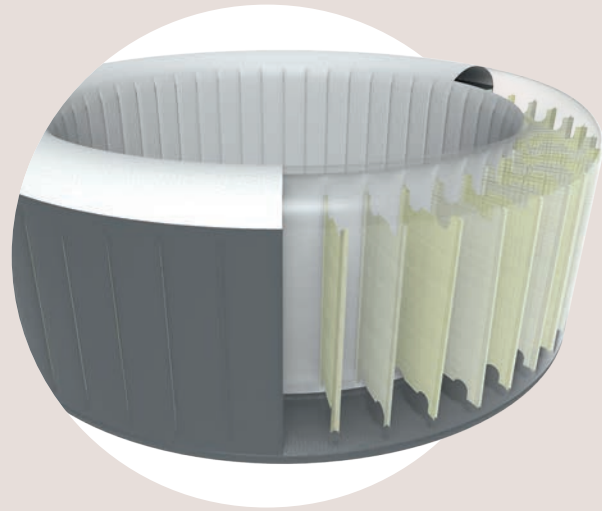
# CONSTRUCTIONS

## Y-BEAM CONSTRUCTION

### Delivering strength and comfort

Lay-Z-Spa's Y-Beam construction is designed to offer superior structural stability while maintaining a comfortable surface for a luxurious, refreshing spa experience.

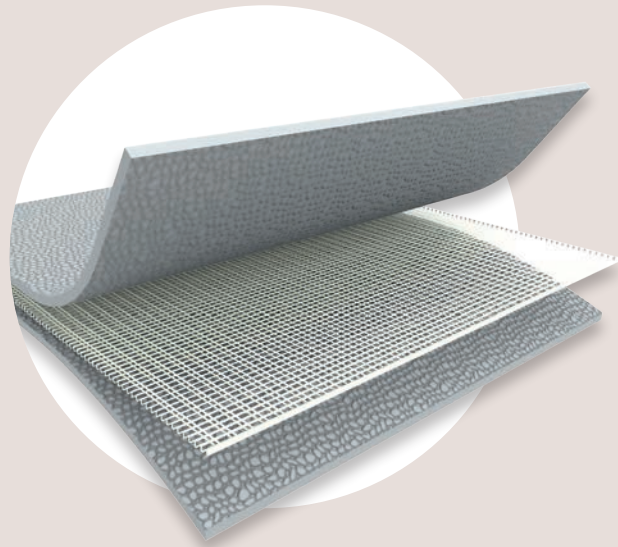
The spa retains its shape no matter how many times it's inflated and deflated, always providing a comfortable, cushioned spa environment.



## TRITECH™ 3-PLY

### Durable, yet comfortable

Tritech™ is a 3-ply reinforced material with a polyester mesh core that's encased in two layers of laminated PVC – offering superior strength and durability to the build of our Spas.

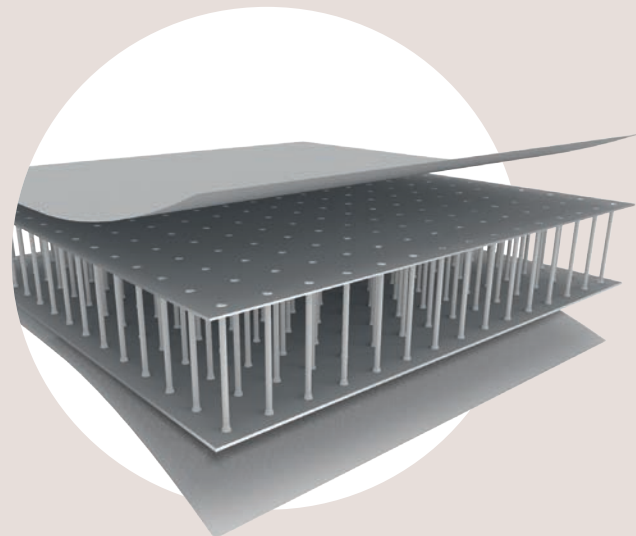


## DROPSTITCH MATERIAL

### Strength and Durability

Inflated walls are made from drop stitch material, providing unparalleled strength and durability.

These threads securely connect the material surfaces internally, while carefully applied sidewalls seal the finished inflated cavity. This creates a panel that effectively supports considerable weight while itself being light and easily portable when deflated.



<b>AirJet™</b>					
<b>ITEM</b>	<b>54123</b>	<b>54148</b>	<b>54129</b>	<b>54174</b>	<b>54154</b>
<b>ITEM</b>					
<b>NAME</b>	Miami	Paris	Palm Springs	Honolulu	Hawaii
<b>INFLATED SIZE</b>	71" x 26"/1.80m x 66cm	77" x 26"/1.96m x 66cm	77" x 28"/1.96m x 71cm	77" x 28"/1.96m x 71cm	71" x 71" x 28"/1.80m x 1.80m x 71cm
<b>WATER CAPACITY (80%)</b>	669 L (177 GAL.)	806 L (213 GAL.)	916 L (242 GAL.)	916 L (242 GAL.)	840 L (222 GAL.)
<b>PEOPLE CAPACITY</b>	2-4 people	4-6 people	4-6 people	4-6 people	4-6 people
<b>MATERIAL</b>	PVC & Tritech™	PVC & Leatheroid	Tritech™	Tritech™	Tritech™
<b>NUMBER OF JETS</b>	81	87	120	120	120
<b>CONTENT OF SET</b>	One durable liner, one heater(220-240V), one filter, ChemConnect, one inflatable cover	Durable Liner, heater(220-240V), filter, ChemConnect dispenser, air pad protector, inflatable cover, LED system	One Tritech liner, one heater(220-240V), one filter, ChemConnect, one air pad protector, one inflatable cover	One Tritech liner, one heater(220-240V), one filter, ChemConnect, one air pad protector, one inflatable cover	One Tritech liner, one heater(220-240V), one filter, ChemConnect, one air pad protector, one inflatable cover



<b>AirJet™</b>		<b>HydroJet™</b>	<b>HydroJet Pro™</b>	
<b>54175</b>	<b>54189</b>	<b>54144</b>	<b>54138</b>	<b>54173</b>
				
St. Moritz	Helsinki	Palm Springs	Hawaii	Maldives
85" x 28"/2.16m x 71cm	71" x 26"/1.80m x 66cm	77" x 28"/1.96m x 71cm	71" x 71" x 28"/1.80m x 1.80m x 71cm	79" x 79" x 31.5"/2.01m x 2.01m x 80cm
1,190 L (314 GAL.)	1,123 L (297 GAL.)	795 L (210 GAL.)	795 L (210 GAL.)	1,050 L (277 GAL.)
5-7 people	5-7 people	4-6 people	4-6 people	5-7 people
Tritech™	Dropstitch™	Tritech™	Tritech™	Tritech™
140	87	8 hydro jets	120 air jets + 8 hydro jets	140 air jets + 8 hydro jets
One Tritech liner, one heater(220V~240V), one filter, ChemConnect, one air pad protector, one inflatable cover	One Dropstitch liner, one heater(220-240V), one filter, ChemConnect, one hand pump, one inflatable cover	One Tritech liner, one heater (220-240V), one filter, ChemConnect, one hand pump, one AC pump, one air pad protector, one inflatable cover	One Tritech liner, one heater(220-240V), one filter, ChemConnect, one air pad protector, one inflatable cover	One Tritech liner, one heater(220V~240V), one filter, ChemConnect, one air pad protector, one inflatable cover, two water powered LED lights,





**Lay-Z-Spa**  
Helsinki



# AirJet™ Helsinki

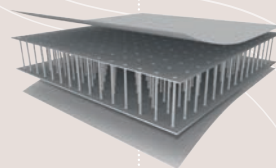
54189



**FREEZE SHIELD™  
TECHNOLOGY**



**WOODEN  
PRINTING**



**DROPSTITCH**

Dreaming of snuggling down into your spa even during the coldest months? Our new and innovative Freeze Shield™ system makes that dream a reality. The Freeze Shield system automatically increases water circulation when temperatures are low to prevent inner parts from damage. The automatic heating system activates itself at 6°C (43°F) and stops at 10°C (50°F). This Freeze Shield technology will keep the water temperature at a pleasant level and increase the lifespan of your spa!

## INCLUDES



**CHEMCONNECT™  
DISPENSER**



**FILTER  
CARTRIDGE**



# RELAX



58419  
LED Floating Pool Light



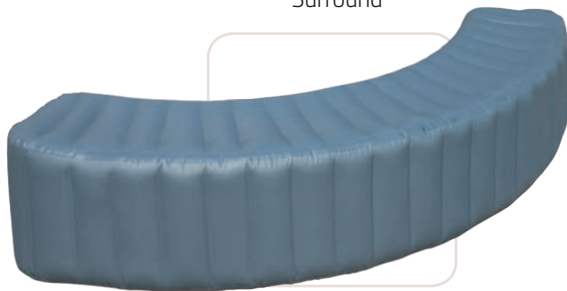
58416  
Lay-Z-Spa™ Drink Holder



58317  
Lay-Z-Spa™ Pillow



58434  
Lay-Z-Spa™ Entertainment Station



58432  
Lay-Z-Spa™ Surround



58464  
Lay-Z-Spa™ Canopy



58460  
Lay-Z-Spa™ Dome





# MAINTENANCE



58142

Flowclear™  
Pool & Spa  
Test Strips



58247

Flowclear™  
Pool & Spa  
Test Strips



58421

Lay-Z-Spa™  
All-in-one  
Tool Set

58487

Lay-Z-Spa™  
Rechargeable  
Underwater  
Vacuum



58461

Lay-Z-Spa™  
Floor Protector



58323

Filter  
Cartridge (VI)



58477

Anti-microbial Filter  
Cartridge (VI)



## 4

# AIRBED & AIR FURNITURE

Our indoor airbeds are constructed with soft, flocked sleeping surfaces for a great night's rest. They are great for when guests are in town and work wonderfully in the spare room, game room, or any room where extra sleeping space is needed. Our airbeds can include our innovative AlwaysAire™ technology, which is available in 2 different versions: AlwaysAire Comfort Choice (3 options for airbed firmness) or AlwaysAire (standard firmness option). The AlwaysAire dual pump automatically and silently reinflates the bed when pressure changes occur, so the bed stays inflated and comfortable during each use.

Bestway® Airbeds are available in a variety of colours, many of them can be used both indoors and outdoors, and they'll sell all throughout the year!



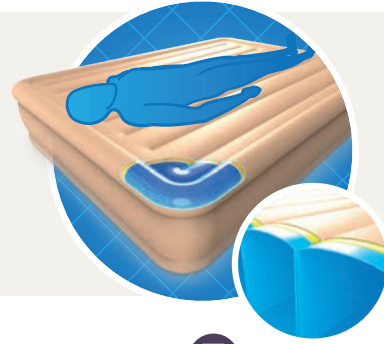




## FORTECH™

Fire retardant: 20% slower **20% SLOWER**  
 Extreme pressure: +70% **+70%**  
 Deformation rate: -20% **-20%**  
 Internal pressure keeping: +20% **+20%**

— \*VERSUS PVC BEAMS —



### STRONG MATERIAL

#### STRETCH RESISTANT

Properties of the Fortech material make the airbeds more resistant to stretching caused by regular inflation and repeated use by consumers.

#### PUNCTURE RESISTANT

Fortech material is 75 more puncture resistant and 150 times more impervious to scratches.

#### INCREASED IGNITION RESISTANCE

Fortech material is 20% more fire retardant.



### COMFORTABLE & CONVENIENT

#### LIGHT WEIGHT MATERIAL

Fortech beds are up to 15% lighter in weight compared to PVC beds of the same size.

#### SOFT MATERIAL

The Fortech material provides a soft and comfortable sleeping surface comparable to that of flocked PVC.

#### Temperature Regulation

The features of the Fortech material ensure that beds do not become too cold or too hot when temperatures fluctuate from hot to cold, as commonly found with PVC beds.



### BUILT TO LAST

#### OVER-INFLATION DAMAGE

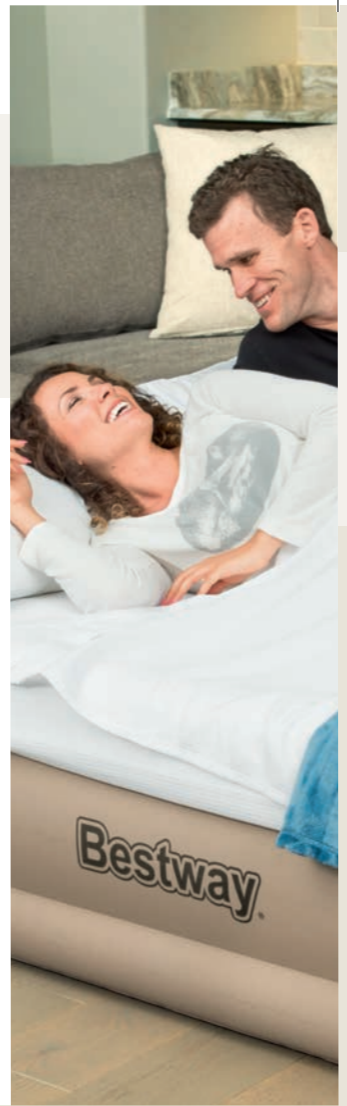
Fortech beds are 70% more resistant to damage caused by over inflation.

#### ROLLER TESTING

When tested with continuous rolling 300 lbs., Fortech beds lasted 35% longer than standard PVC beds.

#### INTERNAL AIR LOSS

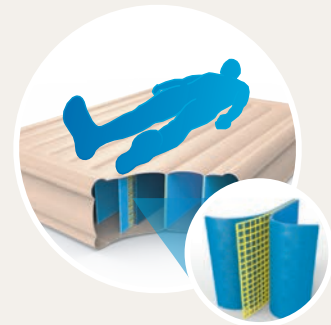
After extended use during simulation testing, Fortech airbeds retain 22% more internal air pressure than PVC beds.



## TRITECH™

Material stretching: **-20%**  
 Rolling test cycle: **+10% STRONGER**  
 Inflation/deflation life cycle: **100% MORE**  
 Durability: **+45%**  
 Internal pressure keeping: **+8%**

— \*VERSUS PVC BEAMS —



This premium grade material can withstand the most extreme conditions including exposure to petroleum products and ultraviolet rays, plus it's stress-tested against the weight, strain, and movement of a good nights sleep.



## DUAL PUMP USB PORT 3 COMFORT SETTINGS

*(only for Comfort Choice)*

### QUICK & EASY DEFLATION

The auto deflation function will allow the bed to deflate without any user hassle.



### ALWAYZAIRE™

The dual pump system includes a pump to inflate and deflate the bed, internal sensors to detect air pressure and a secondary pump that silently maintains bed firmness for all night comfort.

### INTERNAL PSI GAUGE & MOTOR

Can detect drops in internal pressure and will automatically start the silent re-inflation pump to get the bed back to its intended firmness setting.



### ALWAYZAIRE™ - 3 COMFORT SETTINGS

1 Soft, 2 Medium and 3 Firm  
A dual pump system with a patented computerized PSI sensor allows consumers to automatically inflate the bed to 3 different preset PSI settings.



## STANDARD

7" / 18 cm

**67602****Lil' Traveler Airbed**

- 57" x 30" x 7" / 1.45m x 76cm x 18cm



18" / 46 cm

**67622****AlwaysAire Airbed Twin Built-in AC Pump**

- 75" x 38" x 18" / 1.91m x 97cm x 46cm
- One level firmness
- Built in AlwaysAire pump: 220-240 V

**67624****AlwaysAire Airbed Queen Built-in AC Pump**

- 80" x 60" x 18" / 2.03m x 1.52m x 46cm
- one level firmness
- Built in AlwaysAire pump: 220-240 V

**67496****Dream Glimmers Comfort Airbed**

- 52" x 30" x 18" / 1.32m x 76cm x 46cm



## TRITECH™

12" / 30 cm

**67556****Tritech Airbed Twin Built-in AC Pump**

- 74" x 39" x 12" / 1.88m x 99cm x 30cm
- Built in pump: 220-240 V

**67462****Tritech Airbed Full Built-in AC pump**

- 75" x 54" x 12" / 1.91m x 1.37m x 30cm
- Built in pump: 220-240 V

**67464****Tritech Airbed Queen Built-in AC pump**

- 80" x 60" x 12" / 2.03m x 1.52m x 30cm
- Built in pump: 220-240 V



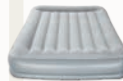
15" / 38 cm

**67626****Tritech Airbed Twin Built-in AC Pump**

- 75" x 38" x 15" / 1.91m x 97cm x 38cm
- Built in pump: 220-240 V

**67632****Tritech Airbed Queen Built-in AC Pump**

- 80" x 60" x 15" / 2.03m x 1.52m x 38cm
- Built in pump: 220-240 V



18" / 46 cm

**67381****Tritech Airbed Twin Handheld AC Pump**

- 75" x 38" x 18" / 1.91m x 97cm x 46cm
- Sidewinder™ AC Air Pump: 220-240 V

**67345****Tritech Airbed Queen Handheld AC Pump**

- 80" x 60" x 18" / 2.03m x 1.52m x 46cm
- Sidewinder™ AC Air Pump: 220-240 V

**67401****Tritech Airbed Twin Built-in AC pump**

- 75" x 38" x 18" / 1.91m x 97cm x 46cm
- Built-in pump: 220-240 V

**67403****Tritech Airbed Queen Built-in AC pump**

- 80" x 60" x 18" / 2.03m x 1.52m x 46cm
- Built-in pump: 220-240 V

**67628****Tritech Airbed Twin Built-in AC Pump**

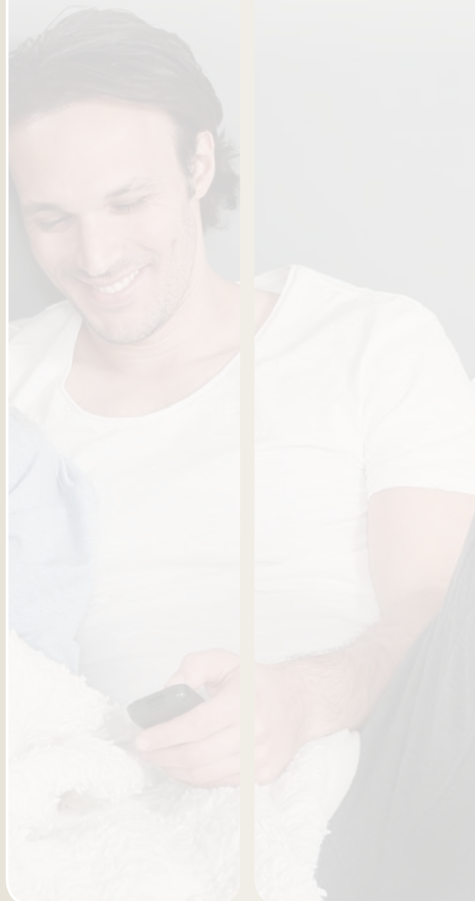
- 75" x 38" x 18" / 1.91m x 97cm x 46cm
- Built-in pump: 220-240 V

**67630****Tritech Airbed Queen Built-in AC Pump**

- 80" x 60" x 18" / 2.03m x 1.52m x 46cm
- Built-in pump: 220-240 V

**67486****Tritech Airbed Queen Built-in AC pump**

- 80" x 60" x 18" / 2.03m x 1.52m x 46cm
- Built-in pump: 220-240 V





## TRITECH™

22" / 56 cm

- 67614**  
**Tritech Airbed Queen**  
**Built-in AC Pump**
- 80" x 60" x 22" / 2.03m x 1.52m x 56cm
  - Built-in pump: 220-240 V



31" / 79 cm

- 67620**  
**Fullsleep Wingback Tritech**  
**Airbed Queen Built-in AC**  
**Pump**
- 92" x 77" x 31.5" / 2.33m x 1.96m x 80cm
  - LED light
  - Built-in pump: 220-240 V



## FORTECH™

14" / 36 cm

- 69007**  
**Fortech Airbed Queen**  
**Built-in AC Pump**
- 80" x 60" x 14" / 2.03m x 1.52m x 36cm
  - Built-in pump: 220-240 V



20" / 51 cm

- 69017**  
**Fortech Airbed Twin Built-in**  
**AC pump**
- 75" x 38" x 20" / 1.91m x 97cm x 51cm
  - Built-in pump: 220-240 V



31" / 79 cm

- 69019**  
**Fortech Airbed Queen**  
**Built-in AC pump**
- 90" x 60" x 31" / 2.29m x 1.52m x 79cm
  - Built-in pump: 220-240 V



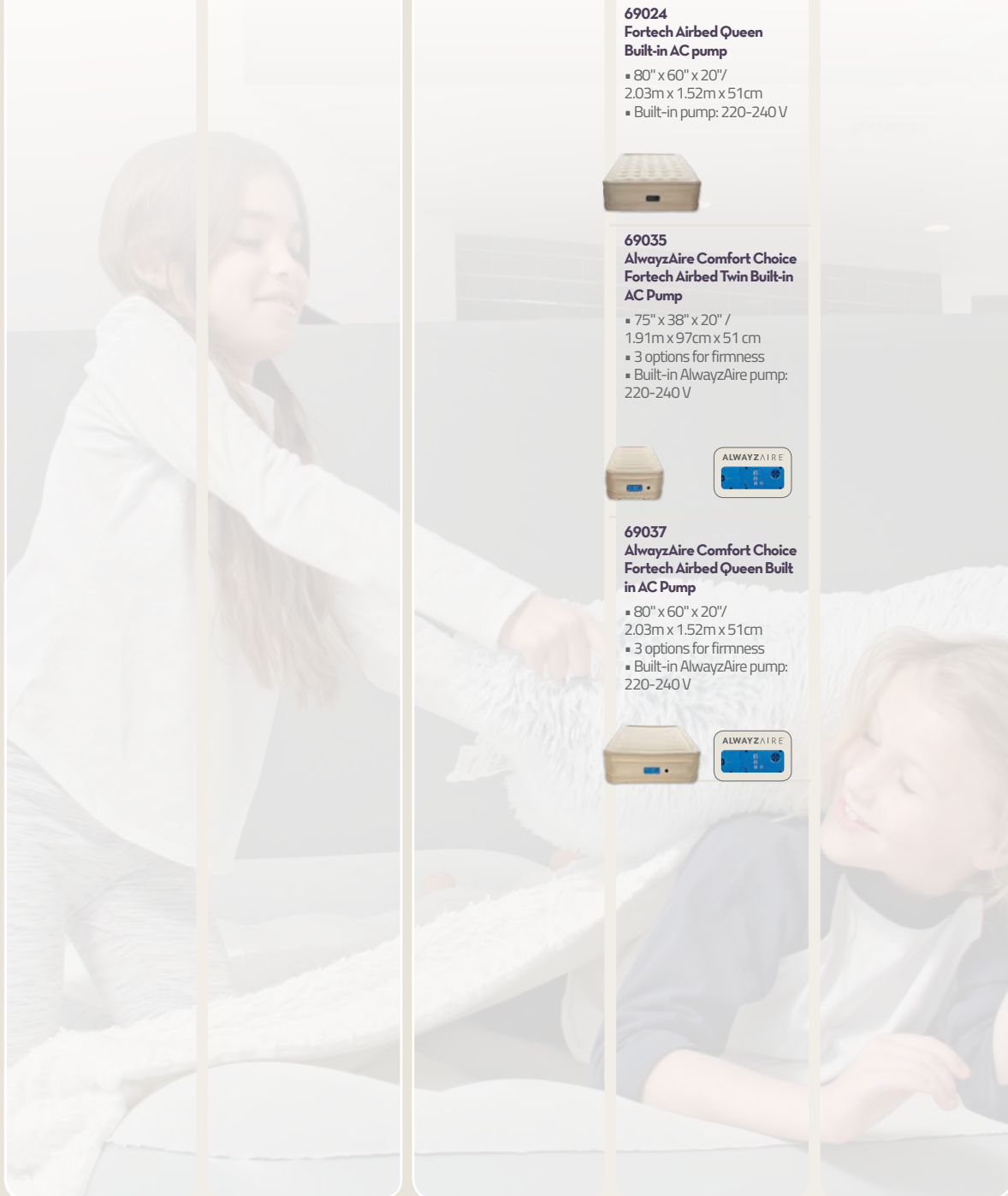
- 69024**  
**Fortech Airbed Queen**  
**Built-in AC pump**
- 80" x 60" x 20" / 2.03m x 1.52m x 51cm
  - Built-in pump: 220-240 V



- 69035**  
**AlwaysAire Comfort Choice**  
**Fortech Airbed Twin Built-in**  
**AC Pump**
- 75" x 38" x 20" / 1.91m x 97cm x 51cm
  - 3 options for firmness
  - Built-in AlwaysAire pump: 220-240 V



- 69037**  
**AlwaysAire Comfort Choice**  
**Fortech Airbed Queen Built**  
**in AC Pump**
- 80" x 60" x 20" / 2.03m x 1.52m x 51cm
  - 3 options for firmness
  - Built-in AlwaysAire pump: 220-240 V



## LOUNGER

**75064**  
**Chaise Sport Lounger**

- 65" x 33" x 31" / 1.65m x 84cm x 79cm
- Flocked surface



## CHAIR

**75046**  
**Comfi cube**

- 29" x 29" x 25" / 74cm x 74cm x 64cm
- Flocked surface
- Removable seat cushion

**75052**  
**Inflate-A-Chair**

- 44" x 44" x 26" / 1.12m x 1.12m x 66cm
- Flocked surface

**75049**  
**Perdura Air Chair**

- 40" x 34" x 29" / 1.02m x 86cm x 74cm
- Flocked surface
- Cup holder

**75053**  
**Comfort Cruiser**  
**Inflate-A-Chair**

- 48" x 37" x 32" / 1.22m x 94cm x 81cm
- Flocked surface
- Foot pad



## COUCH

## NO PUMP

**75058**  
**Deluxe Air Couch**

- 65" x 35" x 25" / 1.65m x 89cm x 64cm
- Flocked surface and sides
- Cup holders

**67277**  
**Multi-Max Air Couch**

- 75" x 38" x 25" / 1.91m x 97cm x 64cm
- Flocked surface
- Dual bed and chair functions

**75063**  
**Multi Max II Air Couch**

- 79" x 63" x 25" / 2.00m x 1.60m x 64cm
- Flocked surface and sides
- Double couch and double bed functions
- Cup holders
- 2 pillows

**75054**  
**Double 5-in-1**  
**Multifunctional Couch**

- 74" x 60" x 25" / 1.88m x 1.52m x 64cm
- Folding design
- 5 adjustable positions



## WITH PUMP

**67356**  
**Multi-Max Air Couch With**  
**Sidewinder AC Air Pump**

- 74" x 60" x 25" / 1.88m x 1.52m x 64cm
- Flocked surface
- Includes Sidewinder AC air pump: 220-240V

**75056**  
**Multifunctional Couch with**  
**Sidewinder-AC Air Pump**

- 74" x 60" x 25" / 1.88m x 1.52m x 64cm
- Double 5-in-1
- Folding design
- 5 adjustable positions
- Includes Sidewinder AC air pump: 220-240V







## 4

# ACCESSORIES

At Bestway, we feel accessories make all the difference in the world; they are a great addition to sell year round! Bestway has a wide variety of assorted pillows that complement our airbeds or can be used on their own – they are perfect travel companions! Our comprehensive line of air pumps (including manual, electric and rechargeable models) simplifies inflation and deflation.



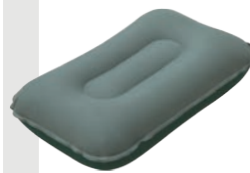
67006 Ea. 36

## FLOCKED AIR NECK REST

- Great for long or short trips
- Comfortable flocked surface
- 2 assorted colors
- Full color box

Size:  
37 cm x 24 cm x 10 cm  
(14.5" x 9.5" x 4")

Colors: ● ●



69034 Ea. 36

## FABRIC AIR PILLOW

- For use as a pillow or a cushioned seat
- Sturdy coil beam construction
- Easy to carry
- Full color box
- Comfortable fabric surface
- Grey Fortech/Green pvc Back
- Repair patch

Size:  
42 cm x 26 cm x 10 cm  
(16.5" x 10" x 4")



67121 Ea. 36

## FLOCKED AIR PILLOW

- For use as a pillow or a cushioned seat
- Sturdy coil beam construction
- Easy to carry
- Full color box
- Comfortable flocked surface
- 2 assorted colors
- Repair patch

Size:  
42 cm x 26 cm x 10 cm  
(16.5" x 10" x 4")

Colors: ● ●



67485 Ea. 36

## TRAVEL PILLOW

- For use as a pillow or a cushioned seat
- Easy to carry
- Full color box
- Comfortable flocked surface
- 3 assorted colors
- Repair patch

Size:  
38 cm x 24 cm x 9 cm  
(15" x 9.5" x 3.5")

Colors: ● ● ●





62004 Ea. 12  
**AIR STEP™  
AIR PUMP**

- Easily switches from inflation to deflation
  - Flexible hose
  - Designed to provide maximum airflow
  - 3 valve adaptors to feat nearly every inflation valve
  - Shrink-wrapped with insert card
- Size:  
28 cm x 19 cm (11" x 7,5")  
Certification:  
GS



62005 Pack 12  
**AIR STEP  
PRO™  
AIR PUMP**

- Easily switches from inflation to deflation
  - Flexible hose
  - Designed to provide maximum airflow
  - 3 valve adaptors to feat nearly every inflation valve
  - Shrink-wrapped with insert card
- Size:  
28 cm x 22 cm (11" x 8,5")  
Certification:  
GS



62007 Ea. 36  
**AIR STEP™  
AIR PUMP**

- Inflation and deflation ports
  - Flexible hose
  - Polybag with header card
  - 3 valve adaptors to feat nearly every inflation valve
- Size:  
13 cm (5")



62023 Ea. 12  
**AIR STEP™  
AIR PUMP**

- Easily switches from inflation to deflation
  - Flexible hose
  - Designed to provide maximum airflow
  - 3 valve adaptors for every inflation valve
  - Shrink-wrapped with insert card
- Size:  
23 cm x 15 cm (9" x 6")  
Certification:  
GS



62002 Ea. 12  
**AIR  
HAMMER™  
INFLATION  
PUMP**

- Large air chamber for rapid inflation
  - Inflates on up and down stroke
  - Designed to provide maximum airflow
  - Full color box
  - 3 valve adaptors
- Size:  
30 cm (12")  
Certification:  
GS



62086 Ea. 6  
**AIR  
HAMMER™  
INFLATION  
PUMP**

- Inflates /deflates on up and down stroke
  - Easy switches from inflation to deflation
  - Heavy-duty construction
  - Full color box (62086)
  - Shrink - wrapped with insert card (62088)
- Size:  
37 cm (14,5")  
Certification:  
GS



62003 Ea. 12  
**AIR  
HAMMER™  
INFLATION  
PUMP**

- Large air chamber for rapid inflation
  - Inflates on up and down stroke
  - Designed to provide maximum airflow
  - Full color box
  - 3 valve adaptors
- Size:  
36 cm (14")  
Certification:  
GS



62008 Ea. 36  
**MINI AIR  
HAMMER™  
INFLATION  
PUMP**

- Heavy-duty construction
  - Inflates on up and down stroke
  - Compact size
  - Polybag with header card
  - Two assorted colors
- Size:  
28 cm (11")  
Certification:  
GS



62030 Ea. 4  
**AIR  
HAMMER™  
INFLATION  
PUMP**

- Inflates and deflates on up and down stroke
  - Easy switches from inflation to deflation
  - Heavy-duty construction
  - 3 valve adaptors
  - Full color box(62030)
  - Shrink-wrapped with insert card (62089)
- Size:  
48 cm (19")  
Certification:  
GS



62038 Ea. 12  
**SIDEWINDER™  
D CELL AIR  
PUMP**

- 3 valve adaptors
  - Inflates and deflates
  - Full color box
- Required Batteries:  
4 x LR20/D  
Certification:  
CE/EAC



62056 Ea. 12  
**SIDEWINDER™  
AC AIR PUMP**

- 3 valve adaptors
  - Inflates and deflates
  - Full color box
- Voltage:  
220 ~ 240 AC  
Certification:  
CE/GS/EAC



62076 Ea. 12  
**12V  
SIDEWINDER™  
AC/DC AIR PUMP**

- 3 valve adaptors
  - Inflates and deflates
  - Full color box
- Voltage:  
220 ~ 240 AC OR 12 DC  
Certification:  
CE/EAC/GS/E-MARK



62083 Ea. 12  
**4.8V  
RECHARGEABLE  
SIDEWINDER™  
AIR PUMP**

- 3 valve adaptors
  - Inflates and deflates
  - Full color box
- Voltage:  
220 ~ 240 AC or 12 DC  
Rechargeable Battery  
4 x 1500 mA (Included)  
Certification:  
CE/EAC/E-MARK



62097 Ea. 12  
**SIDEWINDER™  
2 GO DC  
AIR PUMP**

- 3 valve adaptors
  - Inflates and deflates
  - Full color box
- Voltage:  
12 DC  
Certification:  
CE/EAC/E-MARK



62098 Ea. 12  
**SIDEWINDER™  
AC POWER GRIP  
AIR PUMP**

- 3 valve adaptors
  - Inflates and deflates
  - Full color box
- Voltage:  
220 ~ 240 AC  
Certification:  
CE/EAC/GS



62101 Ea. 12  
**3,7 V  
AIRETRAVEL  
PORTABLE  
USB POWERED  
HANDHELD PUMP**

- 2.6in.x2.4in.x4in./6.6cmx6cmx10.2cm
- USB powered.
- Suitable for most air mattresses, pool floats, swim rings, beach balls and other inflatable toys.
- Weighs only 220g.
- Inflates and deflates
- Includes 2 x 2200mAh rechargeable batteries

# 2019 WINTER PROMOTIONAL MATERIAL & MERCHANDISING

**PO13LIC**

Fisher-Price®  
Range Foldable  
Totem

**PO20LIC**

Fisher-Price®  
Lifestyle Foldable  
Totem

**PO76SUM**

Up In & Over™  
Foldable Totem



**PO32SPA**

Lay-Z-Spa™  
Helsinki Winter  
Banner



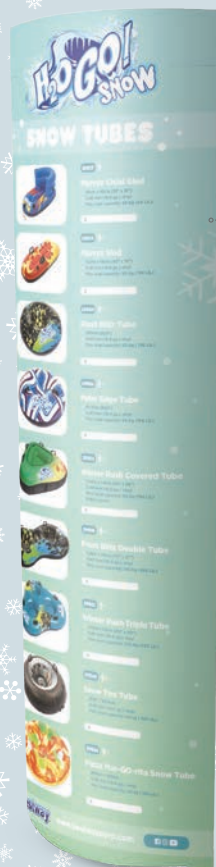
**PO01WIN**

H2OGO™ Snow  
Lifestyle Banner



**PO05WIN**

H2OGO™ Snow  
Product Range  
Foldable Totem



**PO02WIN**

H2OGO™ Snow  
Banner

**MO01WIN**

H2OGO™ Snow  
Wool Cap

**PO03WIN**

H2OGO™ Snow  
Banner







GROWING UP, IN & OVER  
Discover our full range of Toys!

What are you  
thinking about,  
love?

Nothing  
Mom...



**Bestway**

[www.bestwaycorp.com](http://www.bestwaycorp.com)





20  
19

OUTDOOR AND INDOOR LEISURE

# WINTER

Collection

## SHANGHAI



Bestway Global Holding Inc.  
No.3065 Cao An Road,  
Shanghai, 201812, China  
Tel: 86 21 6913 5588  
Fax: 86 21 5913 8383  
E-mail: info@bestwaycorp.com

## HONG KONG



Bestway (Hong Kong) International Ltd.  
Suite 713, 7/Floor, East Wing, Tsim Sha Tsui Centre,  
66 Mody Road, Kowloon, Hong Kong  
Tel: 852 2997 7169  
Fax: 852 2997 7869  
E-mail: info@bestwaycorp.hk

## EUROPE



Bestway (Europe) S.r.l.  
Via Resistenza, 5  
20098 San Giuliano M.se (Mi), Italy  
Tel: 39 02 9884 881  
Fax: 39 02 9884 8828  
E-mail: info@bestwaycorp.eu

## LATIN AMERICA



Bestway Central & South America Ltda  
Salar Ascotan 1282, Parque Enea,  
Pudahuel, Santiago, Chile  
Tel: 562 3203 6438  
Fax: 562 3203 6409  
E-mail: info@bestwaycorp.lat

## U.S.A.



Bestway (USA) Inc.  
3411 E. Harbour Drive, Phoenix, Arizona  
85034, United States of America  
Tel: 1 480 838 3888  
Fax: 1 480 304 3349  
E-mail: info@bestwaycorp.us

## AUSTRALIA



Bestway Australia Pty Limited  
Unit 10/71-83 Asquith Street,  
Silverwater, NSW 2128, Australia  
Tel: 61 2 9037 1388  
Fax: 61 2 9737 9423  
E-mail: info@bestwaycorp.com.au

## BRAZIL



Bestway Brazil  
Rua São João, 1648 Maringá - PR - Brazil  
Zip Code: 87030-201  
Tel: 0800 001 8400  
E-mail: info@bestwaycorp.com.br

## FRANCE



Bestway France Sarl  
Espace Berlioz, 100 rue Albert Caquot  
06410 Biot France  
Tel: 33 4 97 04 92 99  
Fax: 33 4 97 04 91 07  
E-mail: info@bestwaycorp.fr

## GERMANY



Bestway Deutschland GmbH  
Parkstraße 11  
24534 Neumünster, Deutschland  
Tel: 49(0) 4321 555 051  
Fax: 49(0) 4321 555 0555  
E-mail: info@bestwaycorp.de

**Bestway**

[www.bestwaycorp.com](http://www.bestwaycorp.com)

©2017 Bestway Inflatables & Material Corp. All rights reserved.